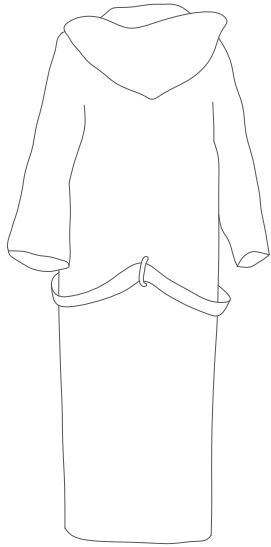


Available in all Codes & Collections



### Materials

99% bamboo 1% water based dye on microfiber  
single sided print with white on reverse

### Dimensions

(cm / inch)	Small	Medium
back length	112 cm / 44.09 in	116 cm / 45.67 in
waist perimeter	108 cm / 42.51 in	114 cm / 44.88 in
sleeve length	53 cm / 20.86 in	55 cm / 21.65 in
(cm / inch)	Large	Extra Large
back length	120 cm / 47.24 in	125 cm / 49.21 in
waist perimeter	120 cm / 47.24 in	126 cm / 49.60 in
sleeve length	58 cm / 22.83 in	60 cm / 23.62 in

(dimensions +/- 3%)

### Maintenance

wash up to 50 degrees  
iron on the non-printed side  
do not bleach

Every order is final and custom made just for you